

Adaptrum

FP-1P Antenna

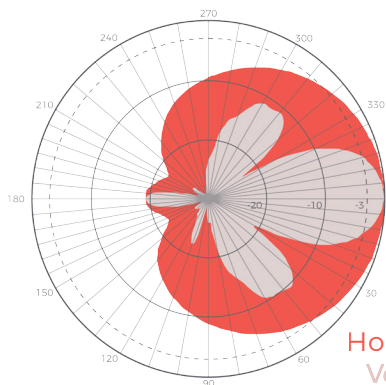
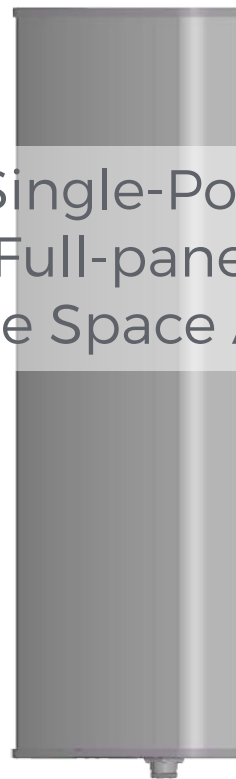
Electrical Specifications

Frequency range	468-700 MHz
Polarization	Vertical
Gain	11±1 dBi
Fixed Electrical Downtilt	0°
Half-power beam width	
Horizontal:	90±8°
Vertical:	30±6°
Front-to-back ratio	≥20 dB
Impedance	50 Ω
VSWR	≤1.5
Maximum power	200 W
Lighting protection	DC Ground

Mechanical Specifications

Connector	N-type Female
Connector position	Bottom
Height/width/depth	33.8 x 11.8 x 5.7 in (858 x 300 x 146 mm)
Weight	22.9 lbs (10.4 kg)
Radome material	UV Protected PVC
Radome color	Gray
Mechanical tilt	0~10°
Operating temperature	-40°C to 60°C (-40°C to 140°F)
Rated wind velocity	60 m/s
Suitable pole diameter	50-75 mm
Mounting kit	JM-VA

Single-Port Full-panel TV White Space Antenna



About Adaptrum

Driving both technical and regulatory innovations, Adaptrum has pioneered the use of previously underutilized TV White Space spectrum. Founded by leading experts in wireless communications, our creative and experienced team is committed to fundamentally changing the wireless industry and enabling universally affordable broadband.